

## Patty Cunningham

A self-taught artist, Patty feels fortunate to have experienced training from many fine artists in Chester County. Her watercolors are inspired by the loose and fluid nature of the medium where it is clear she enjoys the play of color. Brilliant acrylics are an exciting challenge to blend and manipulate and Patty also enjoys the monochromatic tones of dry point

etching. In addition to her fine art work and real estate career, Patty is involved in a partnership of artists who create unique murals for private homes and office buildings, and is a founding board member of Healing Art Works, a foundation to bring original artwork into patient recovery rooms in medical centers.

**Patty has contributed to the following Healing Art Works, Inc. Projects:**

Project 2006 - Penn State Milton S. Hershey Medical Center

Project 2007 - Children's Hospital of Philadelphia

Project 2008 - American Cancer Society Hope Lodge

Project 2009/2010 - Cooper University Hospital

Project 2011/2012 - The Chester County Hospital

*Donated to Project 2009/2010  
Cooper University Hospital*



*Donated to Project 2011/2012  
The Chester County Hospital*



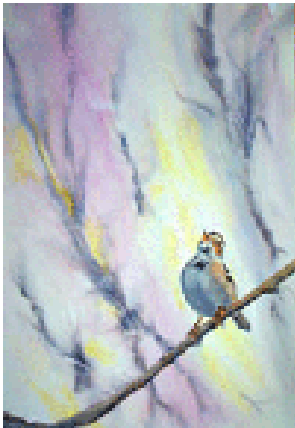
## Patty Cunningham

2

*Donated to Project 2008  
Penn State Milton S. Hershey Medical Center*



*Donated to Project 2007  
Children's Hospital of Philadelphia*



*Donated to Project 2006  
Penn State Milton S. Hershey Medical Center*



**Healing Art Works, Inc. • 210 Ravenwood Drive • Exton, PA 19341 • 610.363.6903**

No portion of this page or any other Healing Art Works, Inc. pages may be used by anyone other than Healing Art Works, Inc.

All images are copyright protected by law and cannot be reproduced in any form